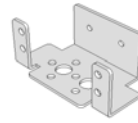


FTC Competition Kit 2009

FTC Qty Brackets & Structural Elements

4 Single Servo Mounting Bracket



4 Servo Joint Bracket w/ Pivot Bearing



2 Dual Servo Bracket



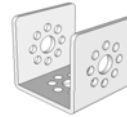
8 Flat Interconnect Bracket



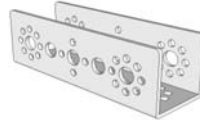
12 L Connector Bracket



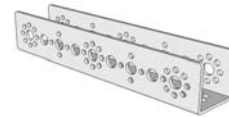
4 Structural Channel - 32mm x 32mm x 32mm



4 Structural Channel - 32mm x 32mm x 96mm



4 Structural Channel - 32mm x 32mm x 160mm



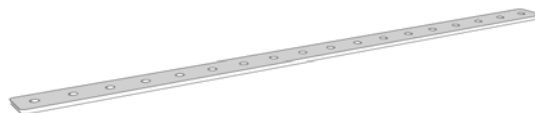
6 Structural Channel - 32mm x 32mm x 288mm



4 Structural Channel - 32mm x 32mm x 416mm



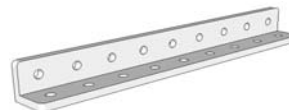
4 Flat Bar 288mm x 16mm



2 Angle Bar 288mm x 16mm



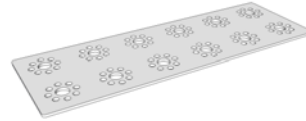
2 Angle Bar 144mm x 16mm



FTC Competition Kit 2009

FTC Qty Brackets & Structural Elements (continued)

4 Perforated Plate 64mm x 192mm



4 Structural Tubing 0.625" diameter x 80mm



4 Structural Tubing 0.625" diameter x 145mm



4 Structural Tubing 0.625" diameter x 220mm



12 Tube Clamp



FTC Qty Servos & Motors

4 HS-475HB Standard Servo w/ Carbonite Gears w/ horn



2 Servo Y Adapter



4 18" Servo Wire Extension



4 152 RPM 12V DC Gearbox Drive Motor w/ 6mm D Shaft



4 DC Motor Connection Wire



4 37mm Clamping Motor Mount w/ Fasteners



4 Gear-to-Wheel Hub Spacer w/ Fasteners



24 Bronze Flanged-Sleeve Bearing 3/16" Shaft Dia., 5/16" OD, 1/2" Length



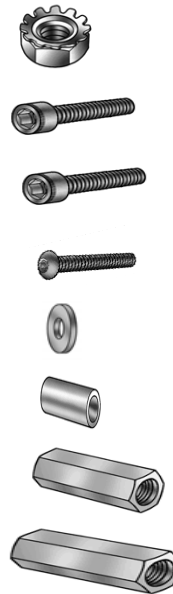
12 Sintered Steel Set Screw Shaft Collar 3/16" Bore, 7/16" OD, 1/4" Length



FTC Competition Kit 2009

FTC Qty Fasteners

- 100 Znc-Pltd Stl Machine Screw Nut W/Tooth
- 100 Alloy Steel Socket Head Cap Screw 6-32 Thread, 1/2" Length
- 100 Alloy Steel Socket Head Cap Screw 6-32 Thread, 5/16" Length
- 50 Alloy Steel Button Head Cap Screw 6-32 Thread, 3/8" Length
- 24 Nylon Unthreaded Round Spacer 3/8" OD, 1/8" Length
- 12 Nylon Unthreaded Round Spacer 3/8" OD, 3/8" Length
- 12 Aluminum Female Threaded Hex Standoff 1/4" Hex, 1" Length
- 12 Aluminum Female Threaded Hex Standoff 1/4" Hex, 2" Length



FTC Qty Wheels, Gears, Drive Train

- 4 3" Diameter Wheel Hub/Tire
- 4 4" Diameter Wheel Hub/Tire
- 12 Clamping Hub Mount 3/16" Bore
- 4 6mm Bore Set Screw Motor D Shaft Mount Hub
- 2 120 Tooth, 32 Pitch Hub Gear
- 4 80 Tooth, 32 Pitch Hub Gear
- 4 40 Tooth, 32 Pitch Hub Gear
- 12 3/16" x 100mm SS Precision D Shafting



FTC Competition Kit 2009

FTC Qty Sensors, Controllers, & Batteries

1 LEGO MINDSTORMS Education NXT Base Set



2 LEGO Touch Sensor (in addition to NXT Base Set sensors)



1 LEGO Light Sensor (in addition to NXT Base Set sensor)



1 HiTechnic NXT Compass Sensor



1 8-Cell AA Battery Holder



1 12v NiMh 3000 mah Rechargeable Battery



1 Battery Charger



1 On/Off Battery Harness



2 DC gearhead motor shaft encoders



1 FTC Bluetooth Dongle



2 Logitech Gaming Controller



1 HiTechnic DC Motor Controller



FTC Competition Kit 2009

FTC Qty Sensors, Controllers, & Batteries (continued)

1 HiTechnic Servo Controller



1 HiTechnic Touch Sensor Multiplexer



12 LEGO Hard Point Connector



FTC Qty Software

1 2008/09 FTC Software (Includes both LabVIEW & MINDSTORMS NXT Software)

1 RobotC



1 FTC Team License

FTC Qty Storage & Tools

1 Plastic Storage Bin with Snap-On Lid and Parts Summary



1 Hex Key Pack (6/64", 3/32", 1/16", 5/64")

